

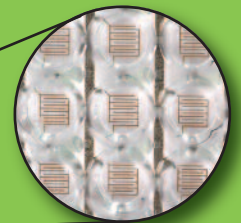
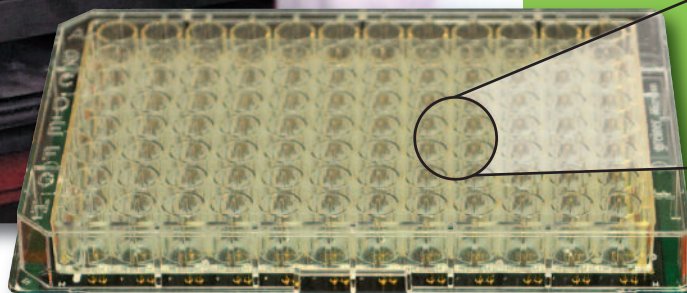


Applied
BioPhysics

CP 96

CELL PROLIFERATION

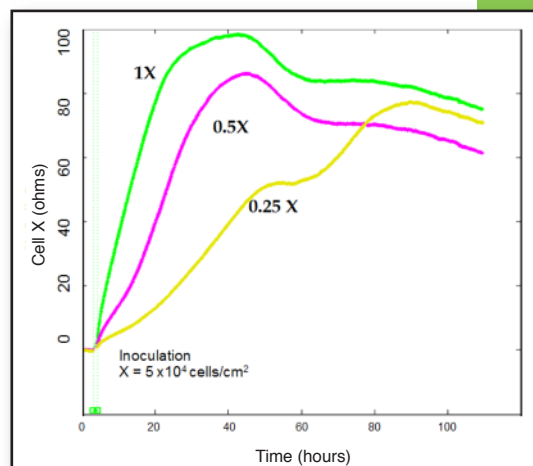
ECIS[®] Cell Proliferation Measurement System



CP96 IDF Microplate Array

Each of the 96 wells has an Inter-digitated finger configuration. The total electrode area is 4mm² which measures a maximum of 4000-8000 cells.

96 Wells
Continuous,
Label Free,
Automated



www.biophysics.com

CP 96

CELL PROLIFERATION

The complete turn-key CP 96 system provides a means to carry out reproducible, label-free, automated cell proliferation measurements. Cell-proliferation is monitored as cells are grown in a normal CO2 tissue culture incubator, and data are reported as real-time changes in percent cell coverage. The system is based upon the ECIS (Electric Cell-substrate Impedance Sensing) technology where cells are grown upon electrodes carrying very weak AC signals. In the CP 96 instrument, the impedance data is automatically analyzed to directly report percent of cell-substrate coverage. These non-invasive measurements can be made for days and even weeks with no need to remove the station from the incubator, eliminating unwanted temperature and pH variations.

Compounds affecting cell growth can be introduced before or after the cells have attached to distinguish changes in growth from the ability of the cells to attach to the substrate.

User friendly software

- CONNECT** Confirms wells are connected
- ZERO** Stores values without cells (flat-fielding).
Before zeroing allow 30 minutes to equilibrate
- SETREF** Select at least 1 cell free reference well to monitor and compensate for incubator changes
- START** Inoculate filters and begin measurement of selected wells
- MARK** Inserts notes with time in the data file
- PAUSE** Clock remains running, data collection paused-recheck connections before resuming

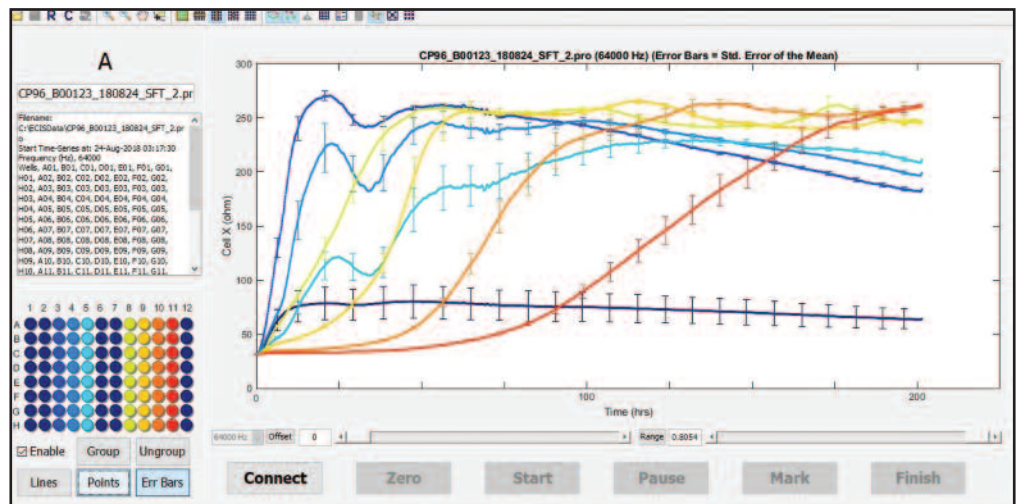


Specifications:

- Measures reactance at 48Khz
- Power: <1 watt, 12 V dc
- Station: 25.5 x 18 x 4.5 cm, 2.3kg
- Controller: 21.5 x 18 x 4.5 cm, 2kg
- Windows 10

System includes:

- 96 channel station located in CO2 incubator
- External control module
- Laptop PC
- ECIS control, acquisition, and display software
- Validation test array
- Six 96W20idf consumable electrode arrays



Distributed by:



185 Jordan Rd, Troy, NY 12180
518-880-6860